



AUCTION

LEADING THE INDUSTRY SINCE 1945

Realtors • Auctioneers • Advisors

WEDNESDAY - JUNE 29, 2022 - 12:30 PM

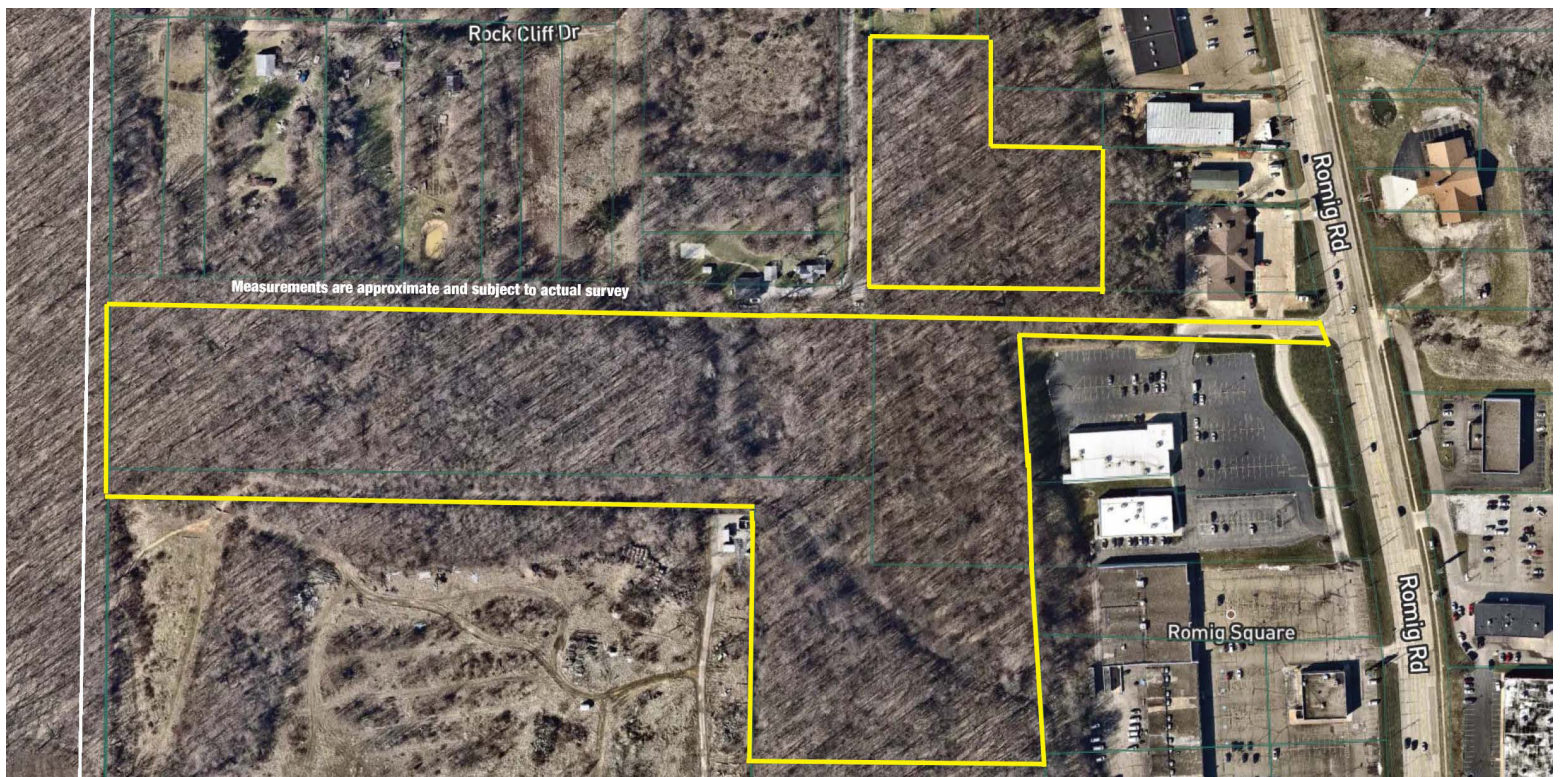
Attention Investors & Developers 19.85 ACRES COMMERCIAL PROPERTY

Akron City – Large Traffic Count On Romig
By Amazon Distribution Center And ALDI - Online Bidding Available

Absolute auction, all sells to the highest bidder. Location:

ROMIG SQ. & ROMIG RD., AKRON, OH 44320

Directions: (Use ALDI at 2100 Romig Rd. for landmark in GPS). From I-76 and RT 224 take the W. State St. exit, then head north, State turns into Romig Rd., then follow to Romig Sq., then turn left. Watch for KIKO signs.



PROPERTY FEATURES: Development opportunity! 19.85 acres just off Romig Rd. Property has access to Romig Sq. (Rockcliff) w/ access to Romig Rd. (traffic light). Property has numerous potential opportunities with zoning. Parcel #6721379 is zoned U1, H1, A1, and a portion in UPD-15. Parcel #6847672, #6847674, and #6756758 are all zoned UPD-45. Multiple uses. Visit www.kikoauctions.com for zoning code descriptions or call Summit County Zoning at 330-375-2350.

TERMS ON REAL ESTATE: 15% down auction day, balance due at closing. A 10% buyer's premium will be added to the highest bid to establish the purchase price. Any desired inspections must be made prior to bidding. All information contained herein was derived from sources believed to be correct. Information is believed to be accurate but not guaranteed. Property to be sold as an Entirety and not to be offered in separate parcels.

AUCTION BY ORDER OF: WOLOCH 111 LLC



Auctioneer/Realtor®
BROOKS E. AMES
330-703-2732
brooks@kikocompany.com



Auctioneer/Realtor®
RICHARD T. KIKO JR.
330-455-9357 ext. 105
dkiko@kikocompany.com

Information is believed to be accurate but not guaranteed. KIKO Auctioneers

800-533-5456 | kikoauctions.com

